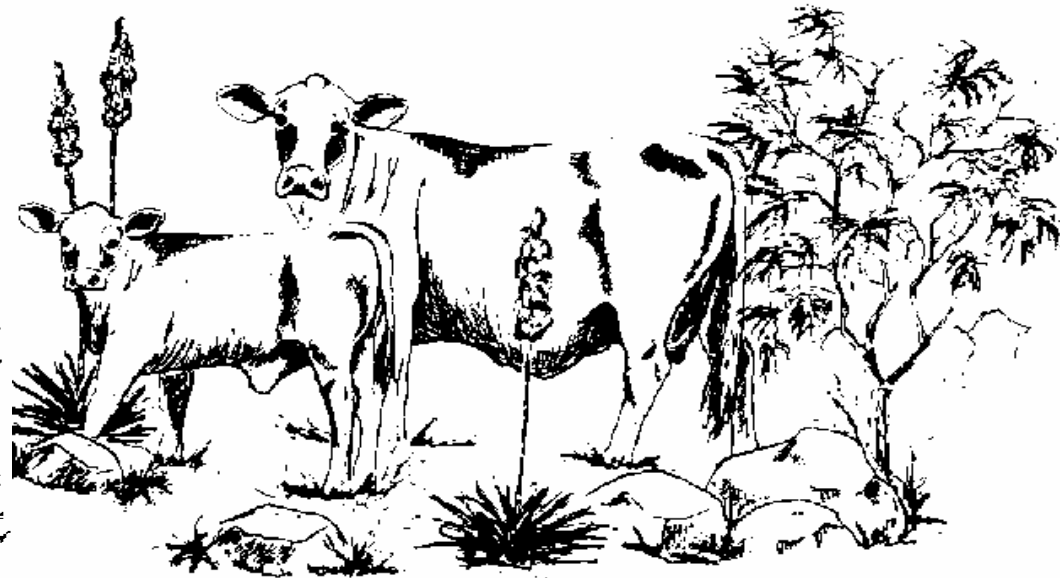
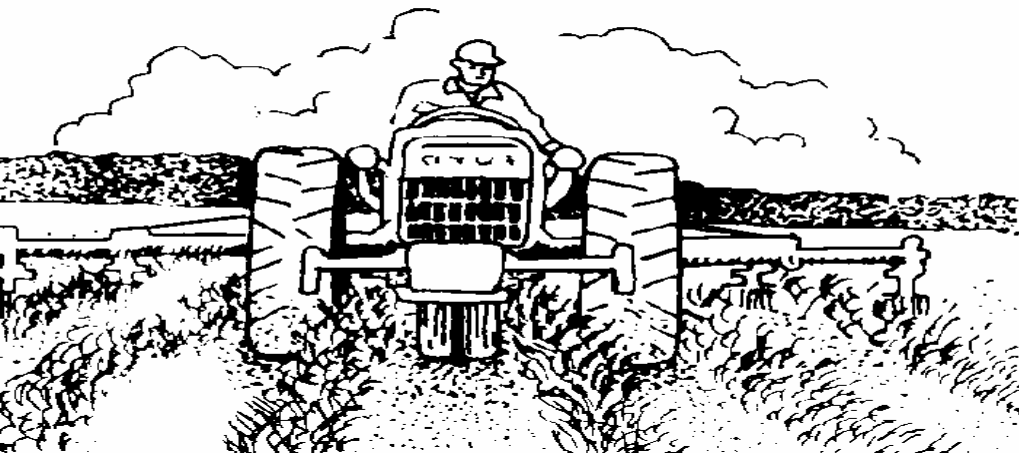
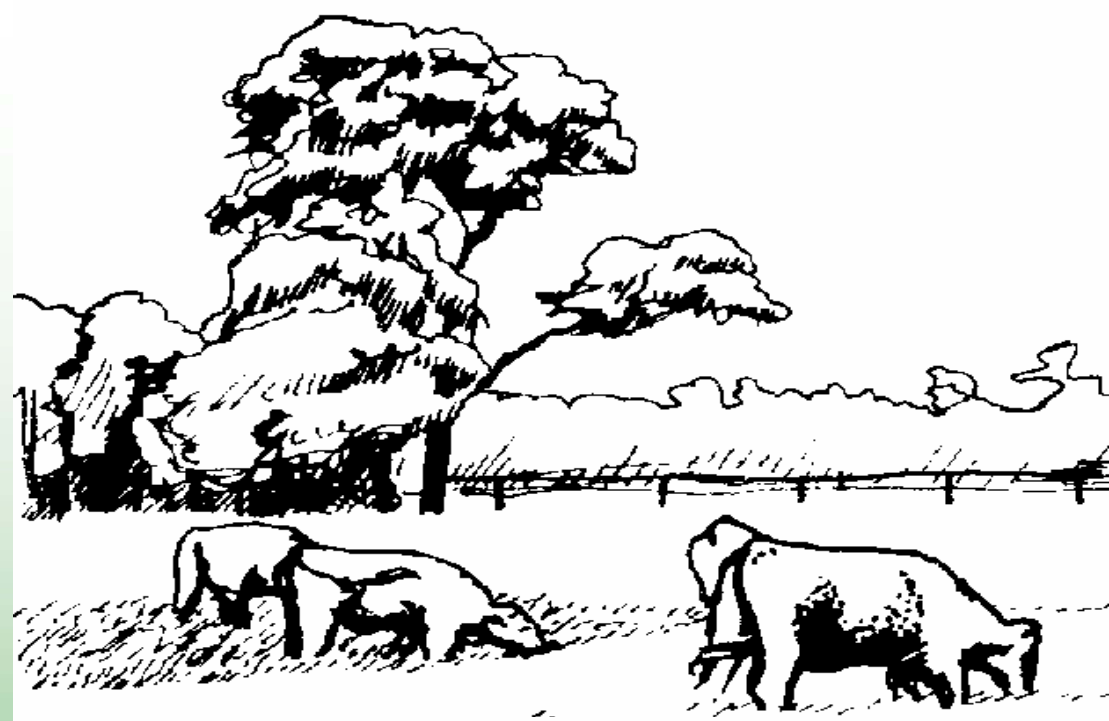
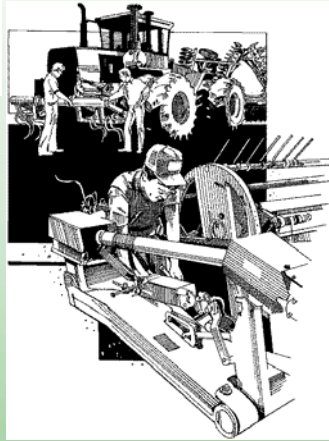
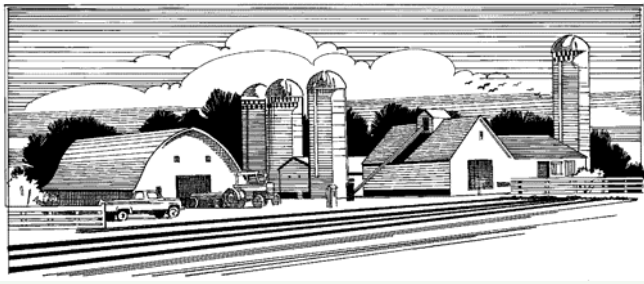
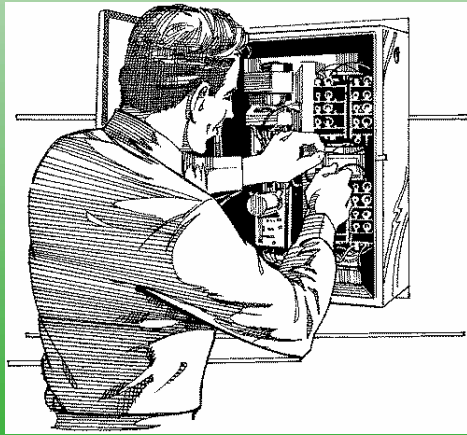


Agriculture is not just row crops and grazing even though those activities occupy most of the land and are your source of ag. income.





Many sites integral to today's agriculture are affected by fire ants but are not "ag land". They can be treated with non-ag pesticides and programs.

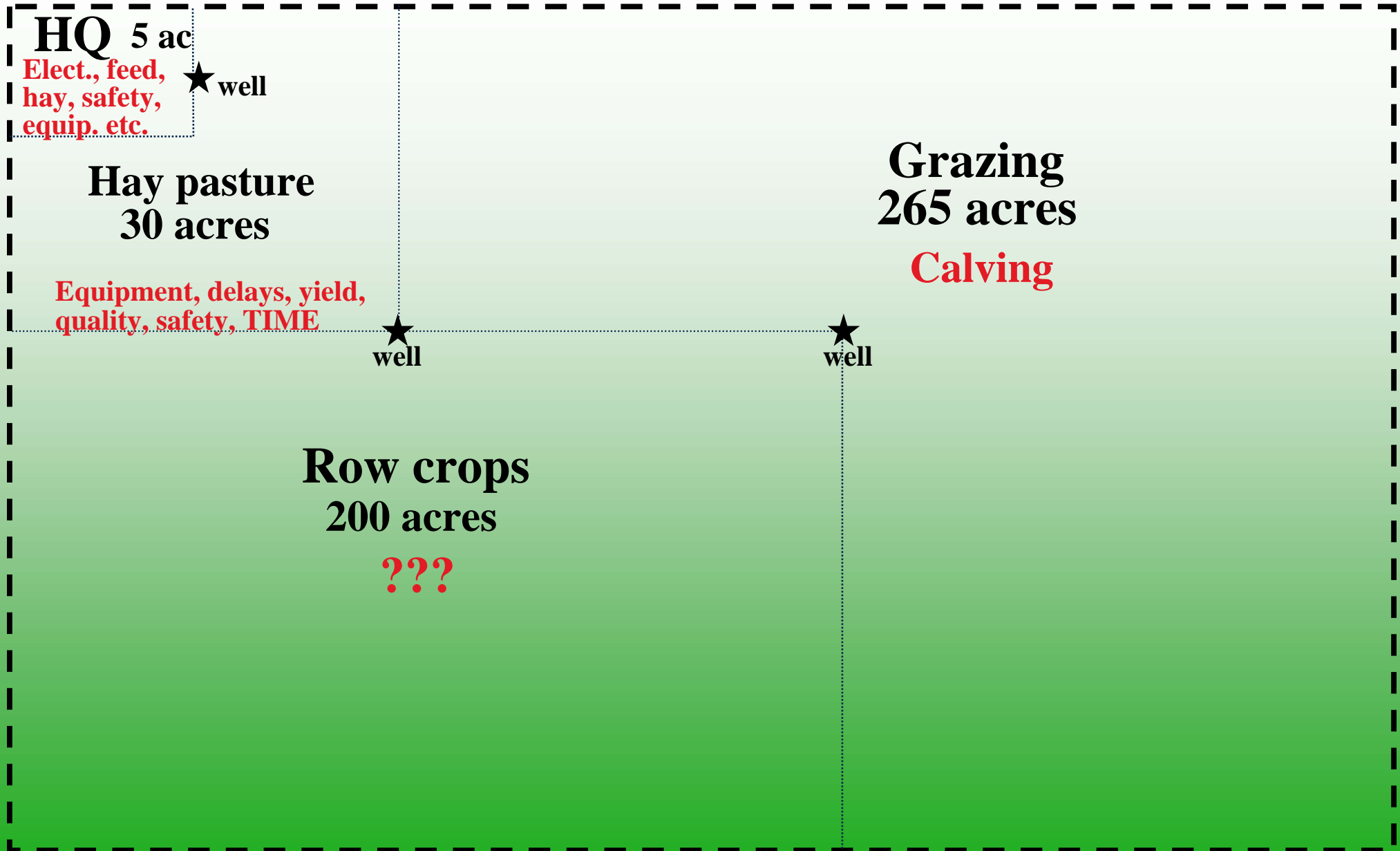




Fire Ant Control on Non-Agricultural Sites In Agriculture

“95% of fire ant-related losses occur on 5% of your land.”

Potential Fire Ant Problems



Potential Fire Ant Annual Losses

HQ 5 ac

\$1,084.74 ★ well
(\$217/ac)

Hay pasture
30 acres

\$240.30 - \$757.80
(\$8.01 - \$25.26/ac)

★
well

Grazing
265 acres

\$405.45 (\$1.53/ac)

★
well

Row crops
200 acres

???

The Balance Sheet

<u>Location</u>	<u>Losses</u>	<u>Control</u> (\$15/ac/yr)	<u>Net</u>
HQ*	\$1085	\$60.00	+\$1,025
Hay	\$998	\$450.00	+\$548
Grazing	\$405	\$3,975	-\$3,570
Row Crop	??	\$3,000	-\$3,000

* includes all electrical

Most losses, such as electrical and feed and hay storage, occur on only one, small site in an operation.



Integrated Pest Management

**Treat for fire ants *ONLY* where they
are costing you money!**



New Products

Citrex - d-limonine IMT, considered “organic”, previous formulation tested well, heavily promoted in Houston

Eliminator w/ Conserve - spinosad bait, will be marketed through Eliminator brand at Wal-Mart, product has won Federal “green” awards, fast but inconsistent control

Over n/ Out - fipronil granular, non-specific toxicant, amazing residual control (tested at over 14 months)

50:50 Hopper Blend of IGR Baits + Amdro

